

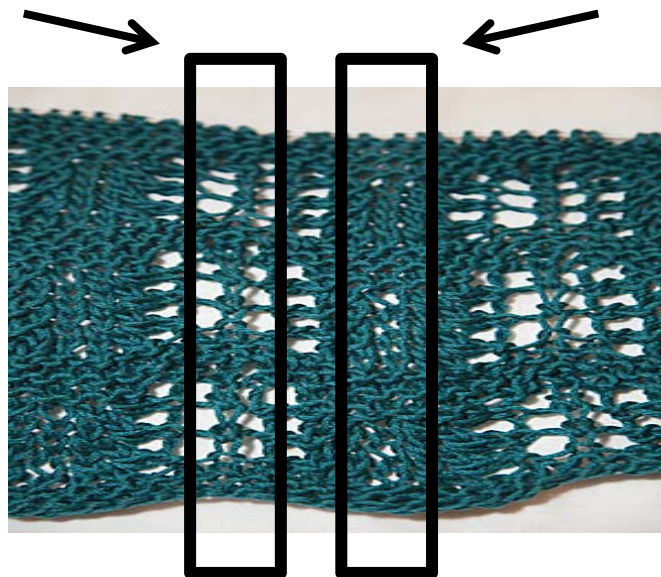
Lace Knitting

Here are a few tips for knitting lace patterns.

1. Dropping stitches is a bigger problem than in plainer patterns. The dropped stitches can quickly go back over several rows.
 - Take your time
 - With this pattern you have five rows of garter stitch, unravelling to the garter stitch rows gives you the ability to pick your stitches up again.
2. Counting stitches. This is normally done by row but knowing you have lost one stitch in a row of 147 sts isn't very helpful. You need to count the pattern stitches (as shown in the chart of pattern – 12 stitches).
 - This pattern is based on a Feather and Fan design, it is well known for baby shawls and blankets. I still remember my first attempt as I found it very frustrating.
 - My solution was to match the centre stitches in each row of the pattern.

The centre of the lace part of the pattern can be found here.

The centre of the solid part of the pattern can be found here.



When I knit this pattern I start with the lace and think: y k y, k centre, y k y; ssk ssk, k centre, k2tog k2tog. I find that this also helps when you are decreasing .